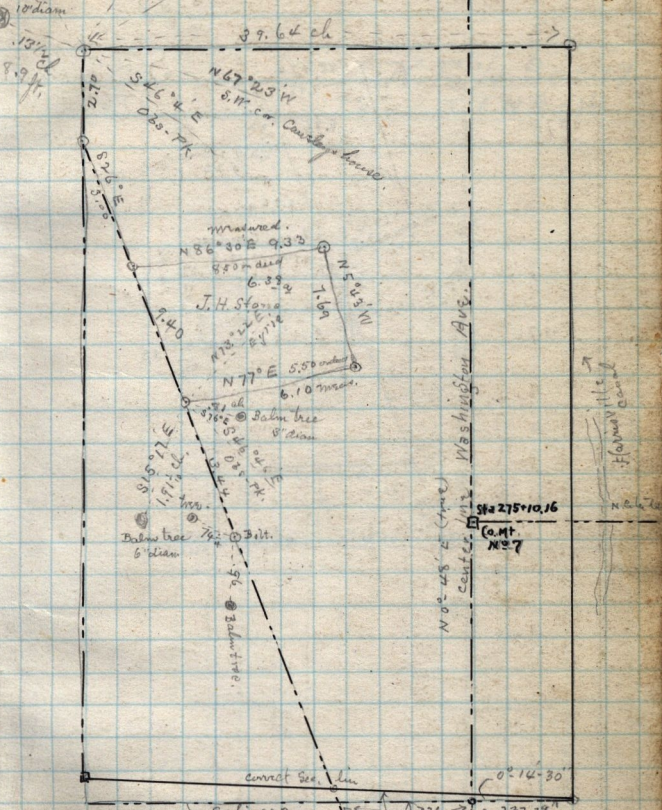
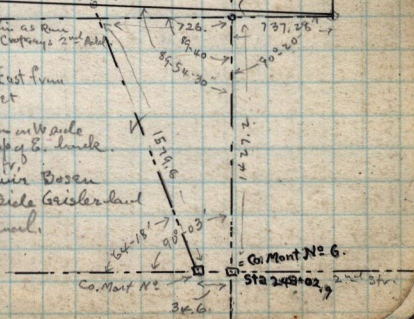


S.E. 1/4 Sec. 8 - T. 6 N. R. 1 W.

Locust  
4" diam.  
20.70 ft.  
13 1/2 ch.  
13 1/2 ch.  
9.9 ft.  
153° 23' E  
Chung on Road  
477° 33' 1/2  
Eyrrie Pk.



etc Oct 26-1908 - in measuring East from  
 Co. Mont No 7 along ctr. of street  
 following notes were made  
 36 = W. bank of Canal 838 = bottom in W. side  
 48 = bottom in E. side 55 = top of E. bank  
 00. = set pine stub in ch. of str.  
 16.5 = Fence run by Wm. & Oliver Rosen  
 21.5 = Fence " S. in W. side Grissler land  
 04. = ctr. North Ocean Canal



June 29 1897